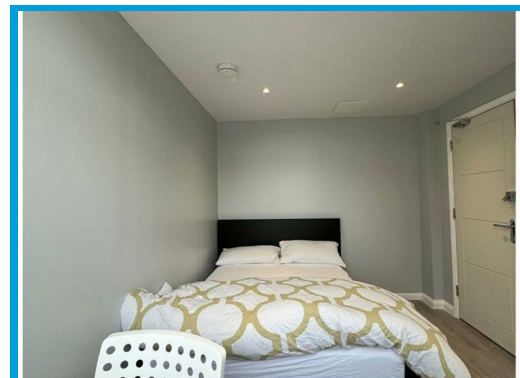
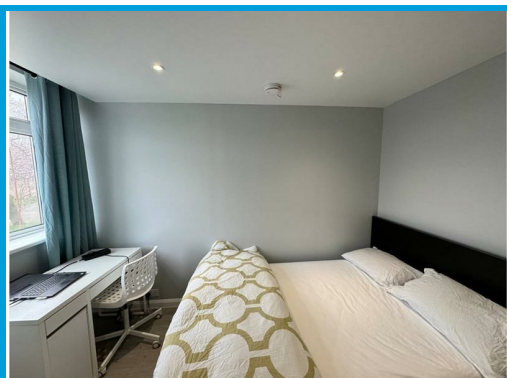




Guildford Park Avenue, Guildford, GU2 7NN

£3,495 PCM

****STUDENT ACCOMMODATION**** A well presented FOUR BEDROOM, FOUR BATHROOM house arranged over three floors located within a short distance to SURREY UNIVERSITY.



Description

The property has four large bedrooms, a good sized living room and a modern kitchen with appliances. There are four bathrooms and storage area for bicycles. There is parking for 3 cars. The property has been recently redecorated and is modern throughout.



Energy Efficiency Rating		
	Current	Potential
Very energy efficient - lower running costs		
(92 plus) A		
(81-91) B		
(69-80) C		
(55-68) D		
(39-54) E		
(21-38) F		
(1-20) G		
Not energy efficient - higher running costs		
69		
England & Wales		EU Directive 2002/91/EC

Environmental Impact (CO ₂) Rating		
	Current	Potential
Very environmentally friendly - lower CO ₂ emissions		
(92 plus) A		
(81-91) B		
(69-80) C		
(55-68) D		
(39-54) E		
(21-38) F		
(1-20) G		
Not environmentally friendly - higher CO ₂ emissions		
England & Wales		EU Directive 2002/91/EC

